

SCARF is a company limited by guarantee (No 94819) and a registered charity (No: SCO 006901)

## Fact Sheet

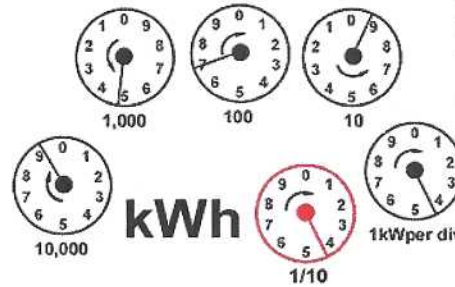
### REF: 512 HOW TO READ YOUR ELECTRICITY METER

You can be confident of the accuracy of your meter, it is a precision instrument, certified prior to its installation. There are basically two types of meter, the digital meter and the electronic meter

#### The Dial Meter

To read a dial meter look at the position of the pointers on the dials and follow these instructions:

- Read the dials from left to right, starting with the dial marked 10,000.
- Ignore the dial marked 1/10 as it is only used for testing.
- When the pointer is between two numbers, always write down the lower number. This is not necessarily the nearest number to the pointer.
- If the pointer is exactly on a number, write it down and underline it.
- If any of the numbers you underlined are followed by a 9, you will need to take one away from the number that you have underlined.



The reading on this example is 94694

#### Digital Meters

The number of units used are shown by a row of figures on the front of the meter. If and when the total number of units recorded exceeded 99,999 the meter starts again at zero (just like the mileage indicator on a car).



#### Single register digital meter

To read a single register digital meter, write down the numbers shown on the meter from left to right, ignoring the last small numbers (these represent only fractions of a unit).

#### Dual register digital meter

The Dual register digital meter uses the Economy 7 tariff and has two rows of figures. The top row is the lower priced night-rate register marked LOW, whilst the bottom row is the day-rate register marked NORMAL. Both top (LOW) and bottom (NORMAL) registers should be read, remembering to read the numbers left to right.



#### Electronic Meters



#### Three rate electronic meter

The three rate electronic meter is used for the Comfort Heat tariff. It has three different rates, Rate 1 (normal period units), Rate 2 (low period units) and Rate 3 (comfort heat period units).

There is an electronic display screen on the front of the meter with blue and orange buttons just below it. The orange button does not perform any operational function; the blue button is used to read your meter. The meter screen always displays your current tariff rates. By pressing the blue button the electronic display screen will show the following sequence.

#### Actual Display Screen

Normal Display	Your current tariff rates
Press once	The current time
Press again	Test display
Press again	Rate 1 units
Press again	Rate 2 units
Press again	Rate 3 units
Press again	Back to your current tariff rates

**Note:** The meter will always automatically revert back to the main display showing the current rates 1 minute after pressing the blue button. The three rates can be read in the normal way, by reading the numbers left to right and disregarding the last two numbers after the decimal point (.00)

#### Mission Statement

SCARF aims to work through partnership to promote sustainable use of energy, eradicate fuel poverty and create sustainable employment and training opportunities.

#### Core Objectives

- + To provide free impartial and accessible energy efficiency advice and information services to help save energy, save cash and help save the environment.
- + To encourage investment in energy efficiency and renewable energy measures and grant take up for property improvements to achieve affordable warmth.
- + To create sustainable employment and training opportunities.

#### SCARF Provides

**One Stop Energy Advice Shop** offers free impartial advice and information:

- + Energy efficiency in the home, business and the community
- + Renewable energy in the home, business and the community
- + Grants for loft and cavity wall insulation
- + Grants for draughtproofing
- + Grants for central heating
- + Grants for renewable energy installations
- + Paying for fuel and fuel suppliers
- + Choice and operation of heating and hot water systems

#### SCARF also offers:

- + Home visits
- + Home energy checks
- + Presentations and informal training
- + NVQ and City & Guilds Qualifications

May 2005